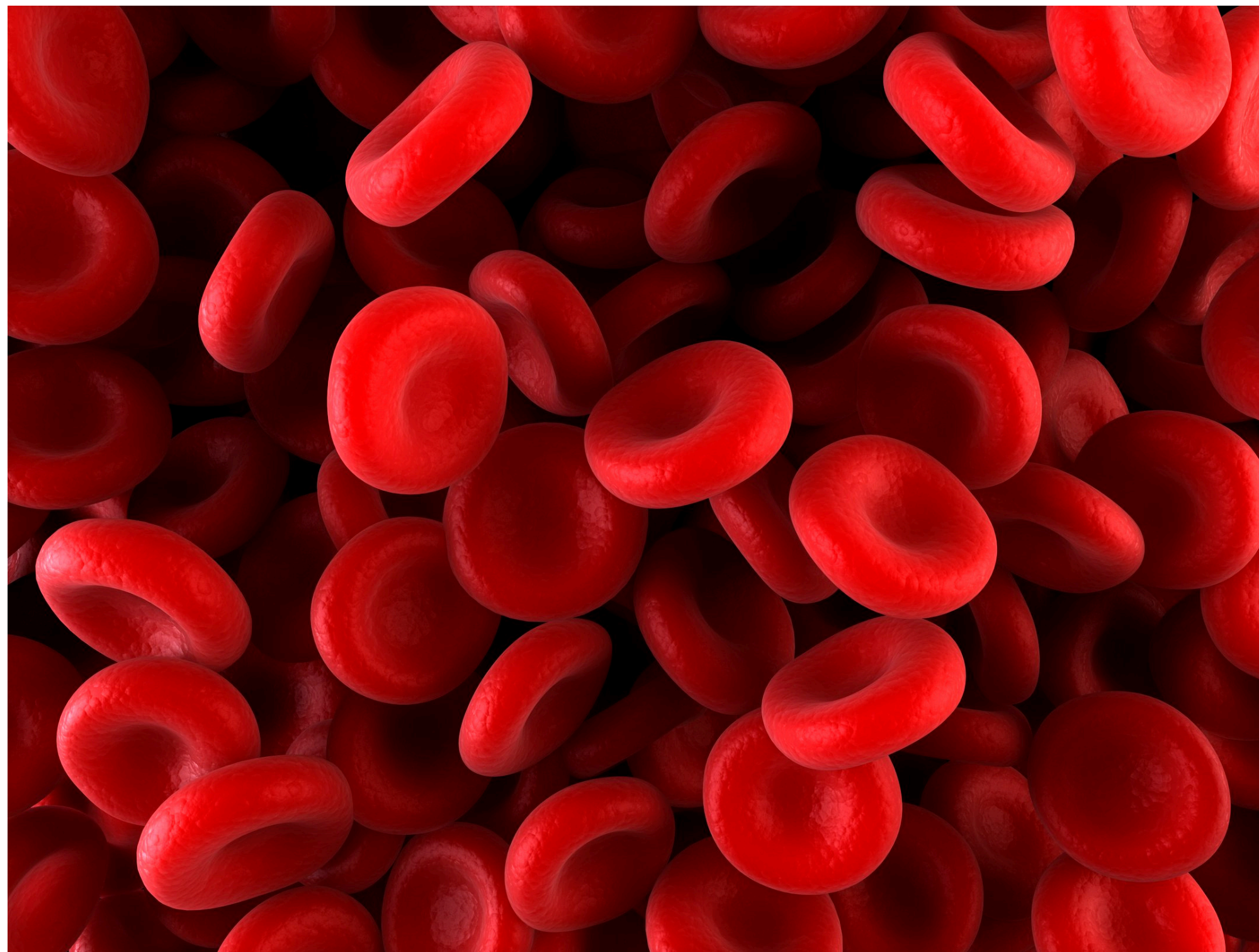




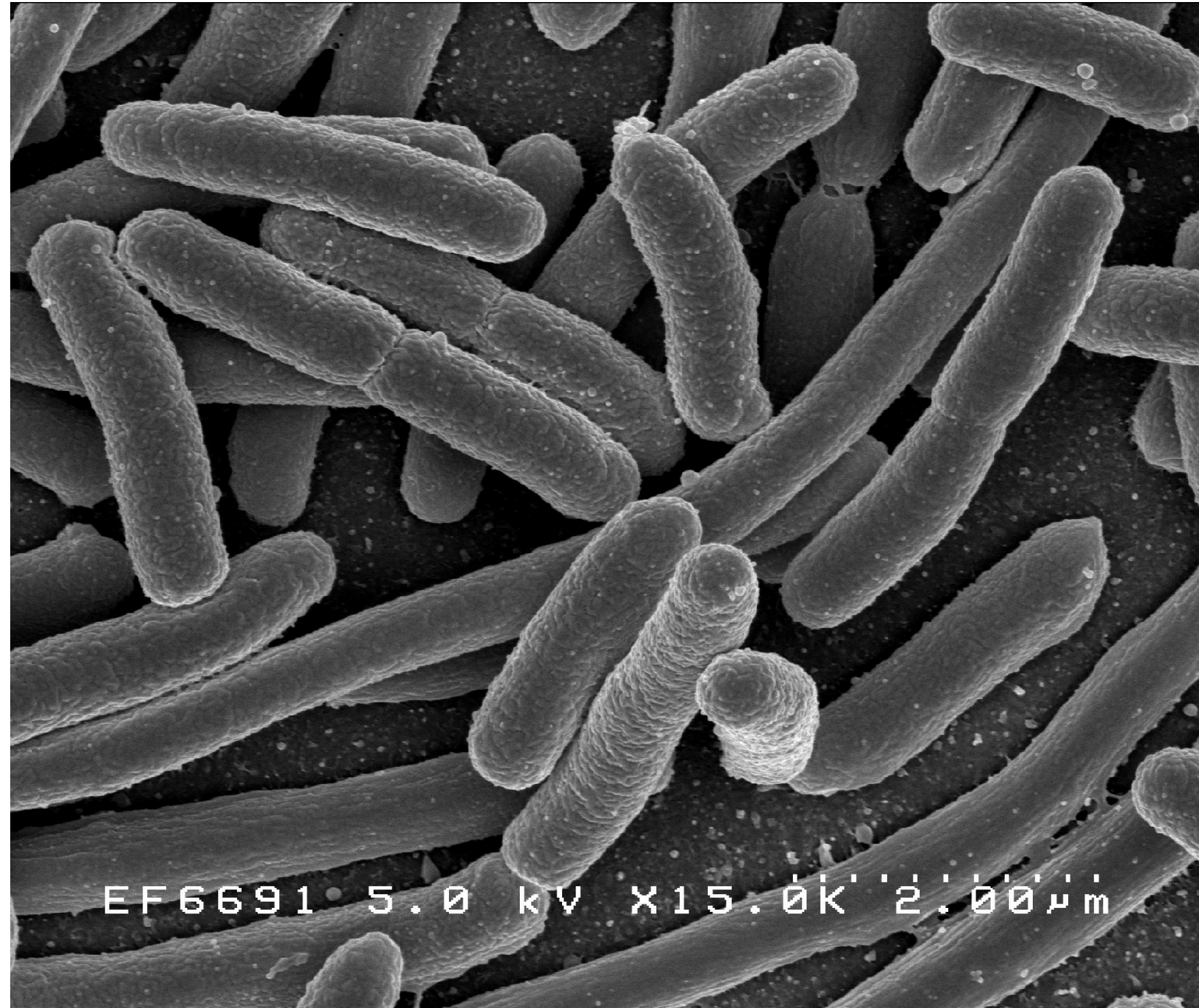
***Saccharomyces cerevisiae* (fungo, levedura) - 10  $\mu$ m**





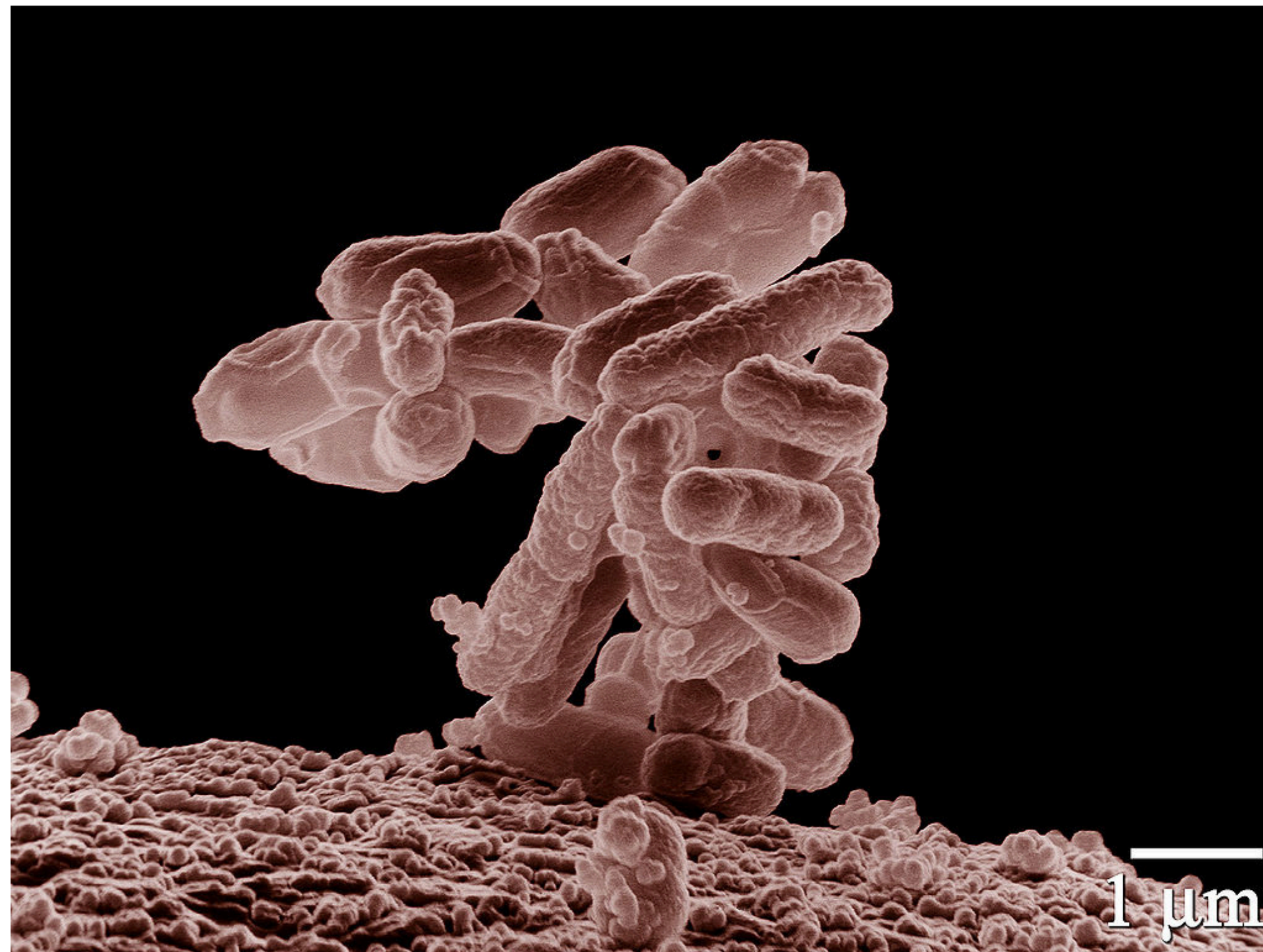
***Hemácias* (células do sangue) - 8  $\mu\text{m}$**



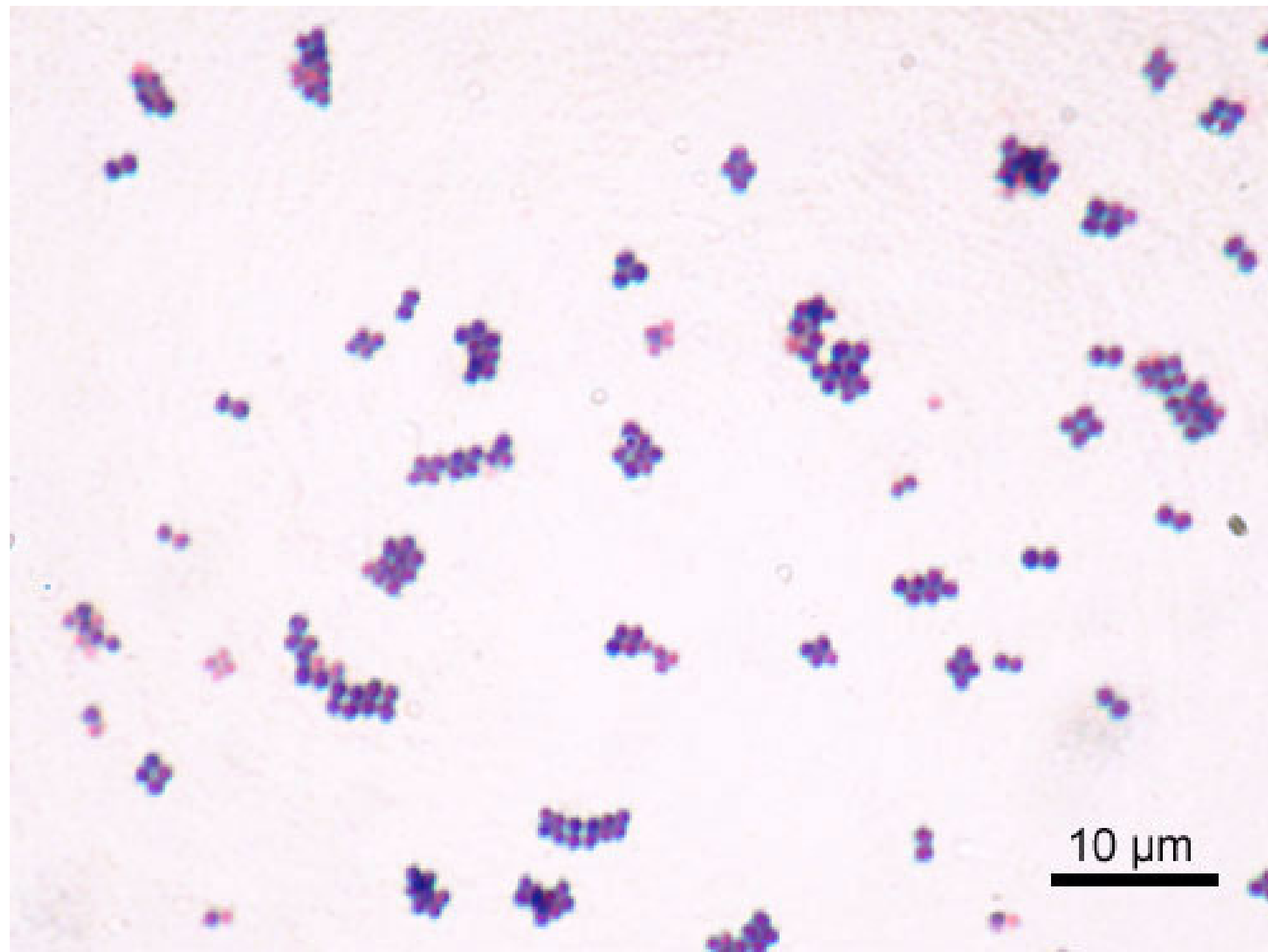


***Lactobacillus sp.* (bactéria) - 2 µm**





***E. coli* (bactéria) - 2 μm**

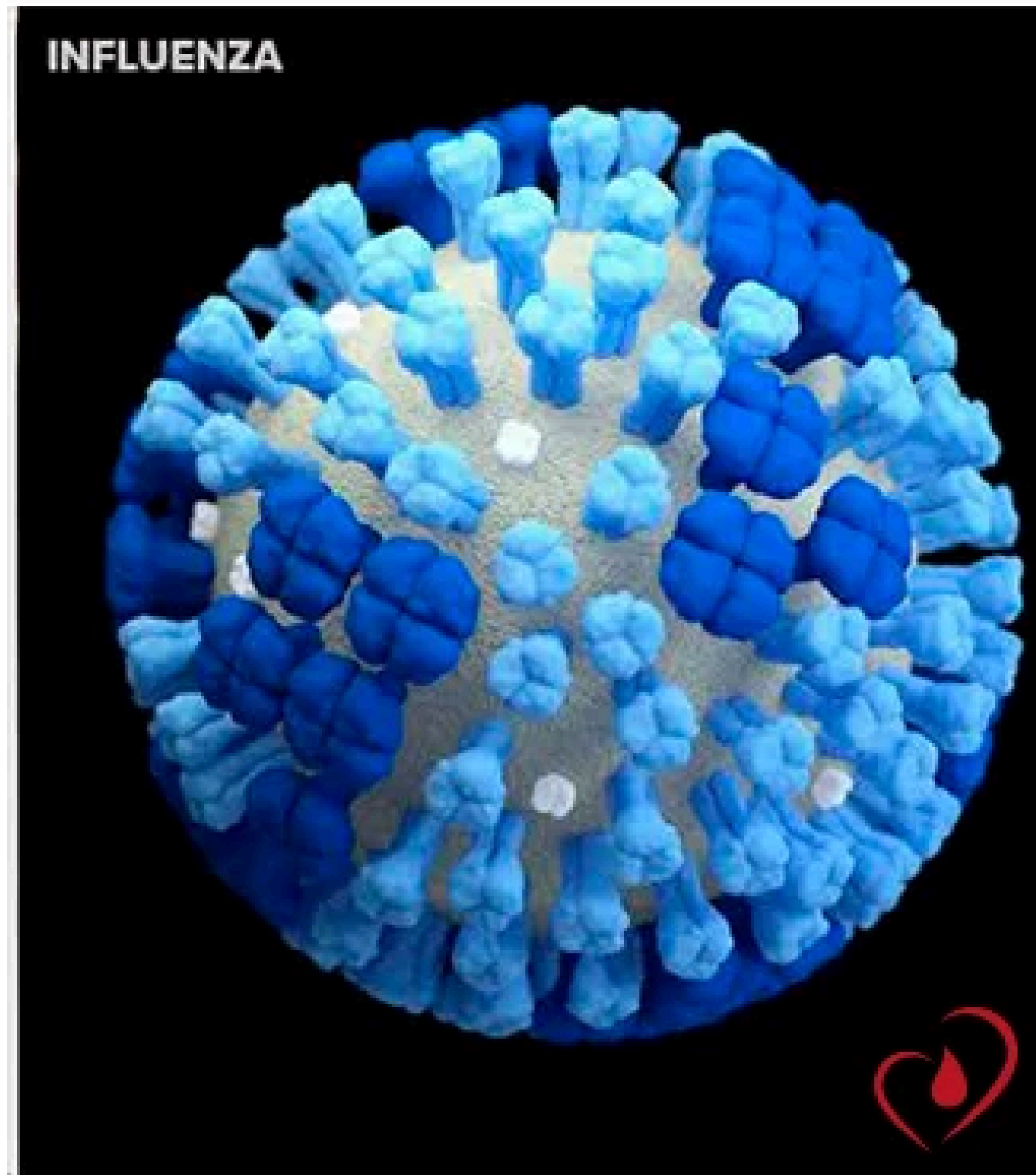


***Staphylococcus* (bactéria) - 1 μm**





***Bacteriófago (vírus) - 0,2  $\mu\text{m}$***



**Influenza (vírus) - 0,1  $\mu\text{m}$**